

SPECIFICATIONS

ZX135US-7H

ENGINE	
Model	Isuzu AR-4JJ1X
Type	4-cycle water-cooled, common rail direct injection
Aspiration	Variable geometry turbocharged, intercooled, cooled EGR
Aftertreatment	DOC + SCR system
No. of cylinders	4
Rated power	
ISO 14396: 2002 gross	105 HP (78.5 kW) at 2,000 min ⁻¹
ISO 9249: 2007 net	100 HP (74.9 kW) at 2,000 min ⁻¹
Maximum torque	277 lbf (375 Nm) at 1,800 min ⁻¹
Piston displacement	183.011 cu. in. (2.999 L)
Bore and stroke	3.8" x 4.1" (95.4 mm x 104.9 mm)
Batteries	2 x 12 V / 58 Ah

HYDRAULIC SYSTEM			
Hydraulic Pumps			
Main pumps	2 variable displacement axial piston pumps		
Maximum oil flow	2 x 27.7 gal/min (105 L/min)		
Pilot pump	1 gear pump		
Maximum oil flow	7.9 gal/min (30 L/min)		
Hydraulic Motors			
Travel	2 variable displacement axial piston motors		
Swing	1 axial piston motor		
Relief Valve Settings			
Implement circuit	4,974.8 psi (34.3 MPa)		
Swing circuit	4,684.7 psi (32.3 MPa)		
Travel circuit	4,974.8 psi (34.3 MPa)		
Pilot circuit	565.6 psi (3.9 MPa)		
Power boost	5,264.9 psi (36.3 MPa)		
Hydraulic Cylinders			
	Quantity	Bore	Rod diameter
Boom	2	4.1" (105 mm)	2.8" (70 mm)
Arm	1	4.5" (115 mm)	3.2" (80 mm)
Bucket	1	3.9" (100 mm)	2.8" (70 mm)

UPPERSTRUCTURE	
Revolving Frame	
D-section frame for resistance to deformation.	
Swing Device	
Axial piston motor with planetary reduction gear is bathed in oil. Swing circle is single-row. Swing parking brake is spring-set/hydraulic-released disc type.	
Swing speed	13.5 min ⁻¹
Swing torque	25,077 lbf (34.0 kNm)

UNDERCARRIAGE	
Tracks	
Heat-treated connecting pins with dirt seals. Hydraulic (grease) track adjusters with shock-absorbing rECOil springs.	
Numbers of Rollers and Shoes on Each Side	
Upper rollers	1
Lower rollers	7
Track shoes	44
Track guards	1
Travel Device	
Each track driven by 2-speed axial piston motor. Parking brake is spring-set/hydraulic-released disc type. Automatic transmission system: High-Low.	
Travel speeds	High: 0 to 3.4 mph (0 to 5.5 km/h)
	Low: 0 to 2.0 mph (0 to 3.3 km/h)
Maximum traction force	26,303 lbf (117 kN)
Gradeability	70% (35°) continuous

SERVICE REFILL CAPACITIES	
Fuel tank	5 8.1 gal (220.0 L)
Engine coolant	5.5 gal (21.0 L)
Engine oil	4.5 gal (17.0 L)
Swing device	0.8 gal (3.2 L)
Travel device (each side)	1.1 gal (4.2 L)
Hydraulic system	41.0 gal (155.0 L)
Hydraulic oil tank	15.8 gal (60.0 L)
DEF/AdBlue® tank	3.2 gal (12.0 L)

ENVIRONMENT	
Engine Emissions	EPA Final Tier 4 / EU Stage IV
Sounds Level	
Sound level in cab according to ISO 6396: 2008	LpA 71 dB(A)
External sound level according to ISO 6395: 2008 and EU Directive 2000/14/EC	LwA 99 dB(A)

WEIGHTS AND GROUND PRESSURE

Operating Weight and Ground Pressure

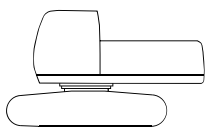
			ZX135US-7H		ZX135US-7H with blade (optional)	
Boom type			Monoblock		Monoblock	
Shoe type	Shoe width, inch (mm)	Arm length, mft-in (m)	lb (kg)	psi (kPa)	lb (kg)	psi (kPa)
Triple grouser	24" (600)	9' 11" (3.01)	31,967 (14,500)	5.51 (38)	34,392 (15,600)	5.95 (41)
	28" (700)	9' 11" (3.01)	32,408 (14,700)	4.79 (33)	35,053 (15,900)	5.22 (36)

Including 0.68 yd³ (0.52 m³) (ISO 7451: 2007 heaped) bucket weight, 904 lb (410 kg) and counterweight, 7,716 lb (3,500 kg)

BASIC MACHINE WEIGHT AND COMPONENTS WEIGHT

Basic Machine Weight and Overall Width

Excluding front end attachment, fuel, hydraulic oil and coolant etc. Including counterweight.



		ZX135US-7H		ZX135US-7H with blade (optional)	
Shoe Type	Shoe width inch (mm)	Weight lb (kg)	Overall width inch (mm)	Weight lb (kg)	Overall width inch (mm)
Triple grouser	24" (600)	25,794 (11,700)	8' 6" (2,590)	28,219 (12,800)	8' 6" (2,590)
	28" (700)	26,235 (11,900)	8' 10" (2,690)	28,660 (13,000)	8' 10" (2,690)

Components Weight

Unit: lb (kg)

		ZX135US-7H
Counterweight		7,716 (3,500)
Monoblock boom (with arm cylinder and boom cylinder)		2,844 (1,290)
Arm 9' 11" (3.01 m) (with bucket cylinder)		1,609 (730)
Bucket ISO 7451: 2007 0.68 yd ³ (0.52 m ³)		904 (410)

BUCKET AND ARM DIGGING FORCE

Unit: lbf (kN)

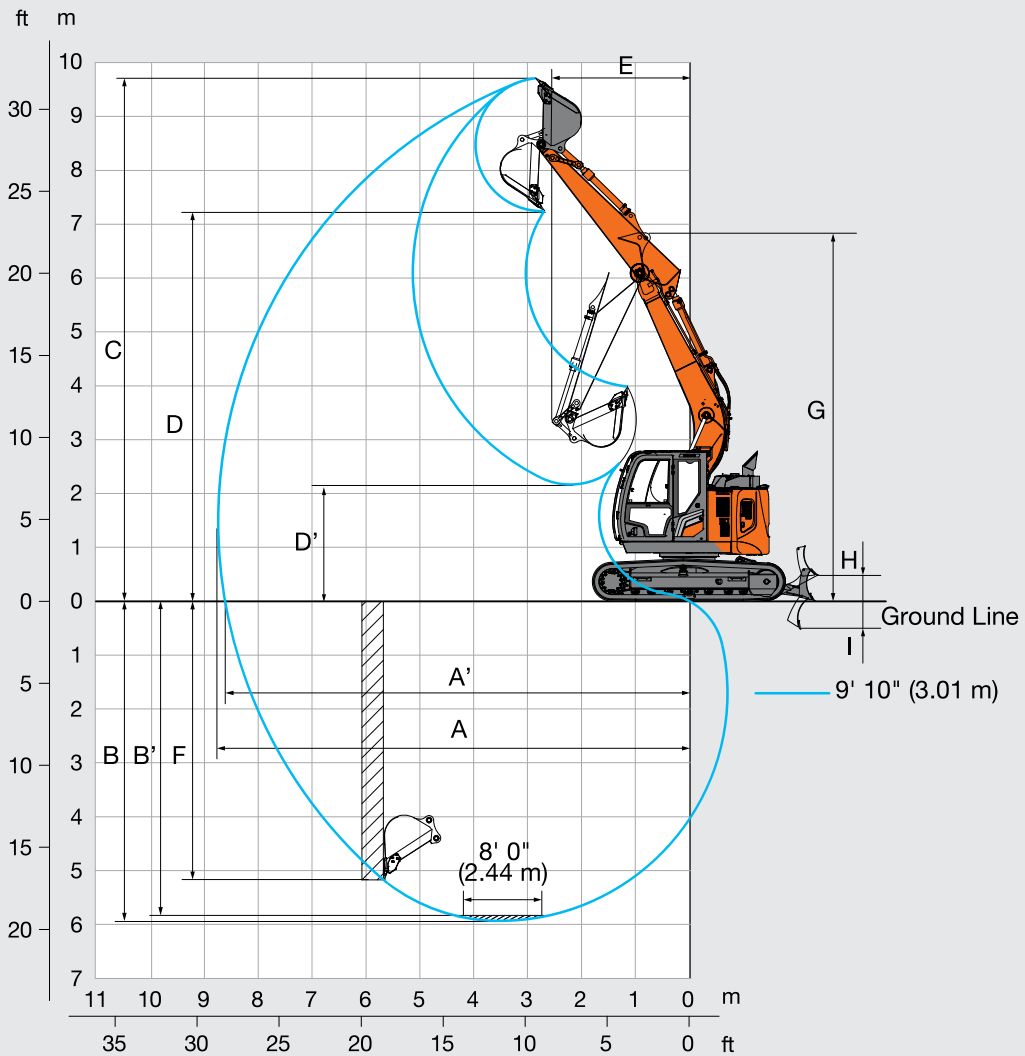
		ZX135US-7H
Arm length		9' 11" (3.01 m)
Bucket digging force* ISO 6015: 2006		23,380 (104)
Arm crowd force* ISO 6015: 2006		13,713 (61)

Calculated value at power boost

SPECIFICATIONS

ZX135US-7H

WORKING RANGES

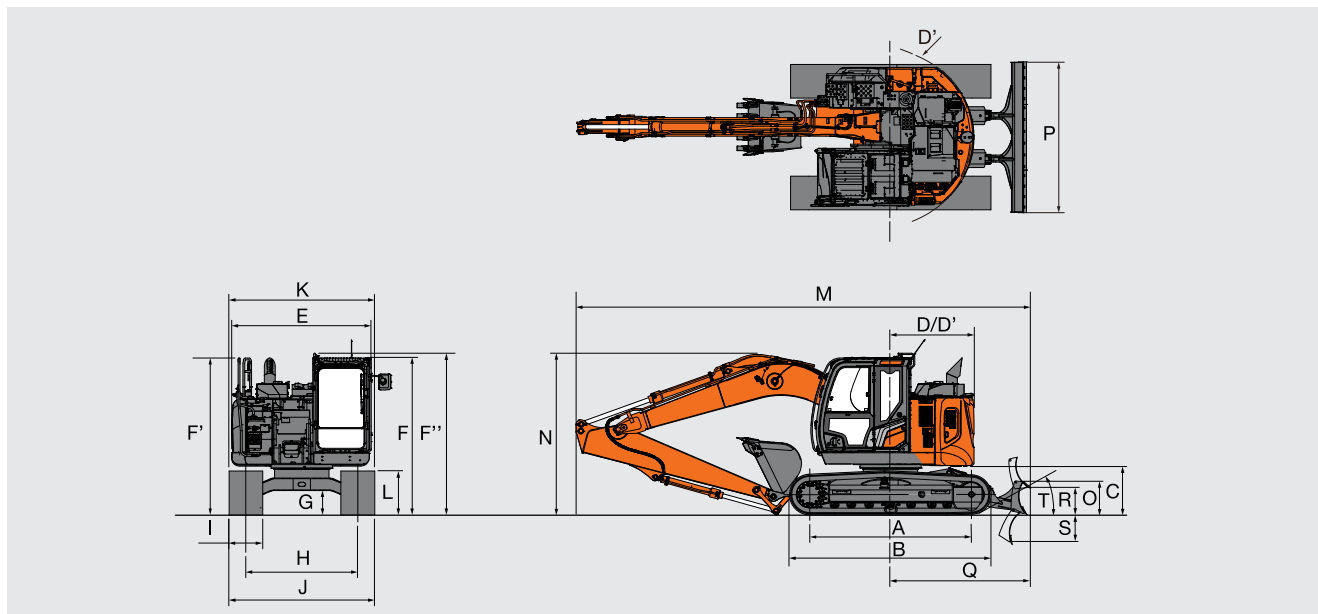


Unit: ft-in (mm)

	ZX135US-7H
	Monoblock boom
Arm length	9' 11" (3.01 m)
A Max. digging reach	29' 0" (8,850)
A' Max. digging reach, on ground	28' 7" (8,720)
B Max. digging depth	19' 7" (5,980)
B' Max. digging depth for 8' 0" (2.44 m) level	19' 0" (5,790)
C Max. cutting height	31' 9" (9,680)
D Max. dumping height	23' 9" (7,230)
D' Min. dumping height	17' 0" (2,130)
E Min. swing radius	8' 4" (2,540)
F Max. vertical wall digging depth	17' 0" (5,170)
G Front height at Min. swing radius	22' 5" (6,820)
H Blade bottom highest position above ground	1' 6" (460)
I Blade bottom lowest position above ground	1' 9" (540)

Excluding track shoe lug

DIMENSIONS



Unit: ft-in (mm)

		ZX135US-7H
		Monoblock boom
A	Distance between tumblers	9' 5" (2,880)
B	Undercarriage length	11' 9" (3,580)
*1	C Counterweight clearance	2' 9" (840)
D	Rear-end swing radius	4' 11" (1,490)
D'	Rear-end length	4' 11" (1,490)
E	Overall width of upperstructure	8' 2" (2,480)
F	Overall height of cab	9' 2" (2,790)
F'	Overall height of handrail	9' 3" (2,810)
F''	Overall height of handrail, on cab	9' 5" (2,870)
*1	G Min. ground clearance	1' 4" (410)
H	Track gauge	6' 6" (1,990)
I	Track shoe width	G 2' 0" (600)
J	Undercarriage width	8' 6" (2,590)
K	Overall width	8' 6" (2,590)
*1	L Track height with triple grouser shoes	2' 7" (790)
M	Overall length with 9' 11" (3.01 m) arm	26' 4" (8,030)
*2	N Overall height of boom with 9' 11" (3.01 m) arm	9' 4" (2,850)
O	Blade height	2' 0" (600)
P	Blade width	8' 10" (2,690)
Q	Distance between the front end of blade and the axis of rotation	8' 0" (2,430)
R	Blade maximum lifting	1' 6" (460)
S	Blade maximum lowering	1' 9" (540)
T	Blade approach angle	26°

*1 Excluding track shoe lug

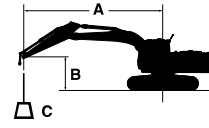
G: Triple grouser shoe

*2 Transport pin position

MACHINE CAPACITIES

ZX135US-7H

- Notes:
1. Ratings are based on ISO 10567: 2007.
 2. Machine capacity does not exceed 75% of tipping load with the machine on firm, level ground or 87% full hydraulic capacity.
 3. The load point is the center-line of the bucket pivot mounting pin on the arm.
 4. * Indicates load limited by hydraulic capacity.
 5. 0 ft (0 m) = Ground.
 6. Machine specifications are determined excluding the bucket.



- A: Load radius
- B: Load point height
- C: Machine capacity

For machine capacities, subtract installed attachment and quick hitch weight from machine capacities. To determine lifting capacities, apply "Rating over-side or 360°" machine capacities from the table and deduct weight of installed attachment and quick hitch. Optional feature may affect machine performance.

ZX135US-7H MONOBLOCK BOOM

Rating over-front Rating over-side or 360° Unit: lb (kg)

Conditions	Load point height ft (m)	Load radius										At max. reach		
		5 ft (1.5 m)		10 ft (3.0 m)		15 ft (4.5 m)		20 ft (6.0 m)		25 ft (7.5 m)		ft-in (meter)		
Boom 15' 1" (4.60 m)	20' (6.0)					6,900* (3,110)*	6,900* (3,110)*	(2,330)*	(2,280)			4,560* (2,050)*	4,560* (2,050)*	19' 9" (6.11)
	15' (4.5)					7,440* (3,400)*	7,440* (3,400)*	7,140* (3,310)*	4,910 (2,280)			4,240* (1,920)*	3,860 (1,730)	22' 10" (6.99)
Arm 9' 11" (3.01 m)	10' (3.0)			10,990* (5,250)*	10,990* (5,250)*	9,200* (4,240)*	7,460 (3,460)	7,080 (3,290)	4,730 (2,200)			4,220* (1,910)*	3,350 (1,510)	24' 6" (7.47)
	5' (1.5)			17,980* (8,350)*	12,570 (5,830)	10,620 (4,930)	6,870 (3,180)	6,810 (3,160)	4,480 (2,080)	4,430* (2,240)*	3,140 (1,460)	4,420* (2,000)*	3,140 (1,420)	25' 0" (7.62)
Counterweight 7,716 lb (3,500 kg)	0 (Ground)			15,300* (6,600)*	11,580 (5,380)	10,100 (4,690)	6,410 (2,970)	6,570 (3,050)	4,260 (1,970)			4,890 (2,220)	3,170 (1,440)	24' 6" (7.46)
	-5' (-1.5)	9,240* (4,110)*	9,240* (4,110)*	19,680 (8,590)	11,340 (5,280)	9,860 (4,580)	6,190 (2,870)	6,450 (2,990)	4,150 (1,920)			5,370 (2,430)	3,470 (1,570)	22' 10" (6.97)
	-10' (-3.0)	16,180* (7,170)*	16,180* (7,170)*	17,360* (8,040)*	11,490 (5,340)	9,890 (4,590)	6,220 (2,880)	(3,020)	(1,950)			6,630 (2,980)	4,290 (1,920)	19' 10" (6.07)
	-15' (-4.5)			11,100* (5,290)*	11,100* (5,290)*	(3,190)	(3,040)					6,930* (3,180)*	6,930* (3,040)*	14' 5" (4.50)