

## Engine

Mitsubishi L3E. Naturally aspirated, watercooled, 4 stroke, 3 cylinder diesel engine.

Ratings at 2400 rpm

Gross power	14.0 kW	19.0 hp
Net power	13.5 kW	18.4 hp

### Dimensions

Bore	76 mm
Stroke	70 mm
Displacement	952 cm <sup>3</sup>

- All engine horsepower (hp) are metric including front page.
- Net power rating per ISO 9249 and EEC 80/1269
- Meets EU Stage II emission requirements

## Sound Levels

Operator sound pressure level is 83 dB(A) for cab and 83 dB(A) for canopy builds when measured per ISO 6396 (dynamic).

## Undercarriage

H-shaped, fabricated frame.

- Fabricated design gives high durability
- Tapered roller frame reduces accumulation of material in the tracks
- Track tension adjustment is accomplished through grease-filled cylinders
- 301.8C variable width undercarriage for increased stability

## Hydraulic System

### Pumps/Pressures/Circuits

Pumps: Two piston, one gear-type (max. delivery)

Tandem	2 x 19.8 lpm
Single	1 x 14.6 lpm

Operating pressures

Equipment	206 bar
Travel	206 bar
Swing	174 bar

Auxiliary circuits

Primary	34.4 lpm at 174 bar
Secondary	14.6 lpm at 174 bar

### Digging Forces

Stick, standard	9.9 kN
Stick, long	8.8 kN
Bucket	15.4 kN

- Auxiliary lines for hammer operation are standard
- Two-way auxiliary lines for work tools such as augers and tilt ditch bucket are optional

## Electrical System

- 40-amp alternator
- 12-volt, 500 CCA, 35 amp/h maintenance free battery
- Sealed electrical connectors

## Blade

	301.6C	301.8C
Width	mm	mm
Standard	980	980
Extended	–	1340
Height of blade	225	255
Dig depth	230	250
Lift height	180	195

- Blade flotation function provides easier operation
- Replaceable, hardened, wear resistant cutting edge
- 301.8C has pin-on blade extensions to match width to extended undercarriage

## Swing System

Machine swing speed 10.5 rpm

Boom swing system with cast swing post

Left (without stop)	90°
Left (with stop)	54°
Right	50°

- Automatic swing brake, spring applied, hydraulic release
- Centralized lubrication

## Service Refill Capacities

	Liters
Cooling system	4.0
Engine oil	4.1
Fuel tank	22
Hydraulic tank	24
Hydraulic system	37

## Weights\*

With bucket, operator, full fuel and auxiliary lines.

	301.6C	301.8C
Canopy (kg)	1610	1680
Cab (kg)	1720	1785

\* Weight depends on machine configuration.

## Travel System

Travel speed

High	4.5 km/h
Low	2.0 km/h

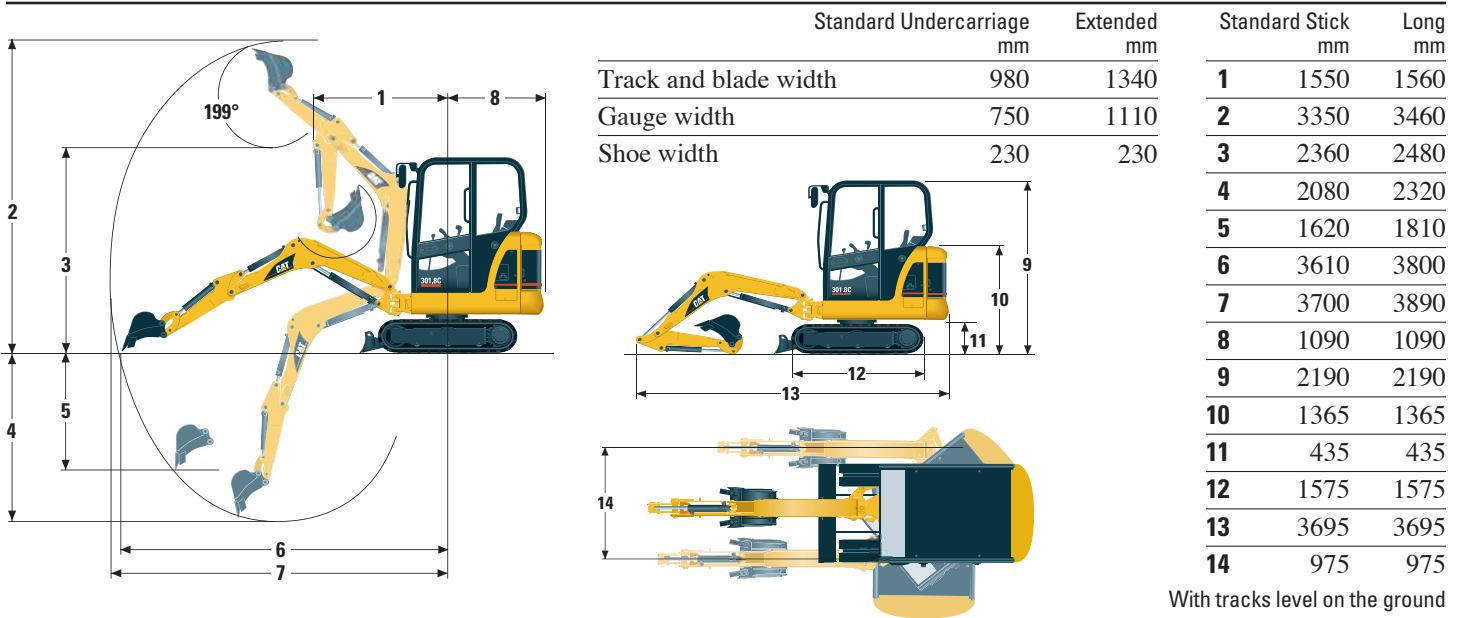
Traction force (max.)

High Speed	7 kN
Low Speed	15 kN

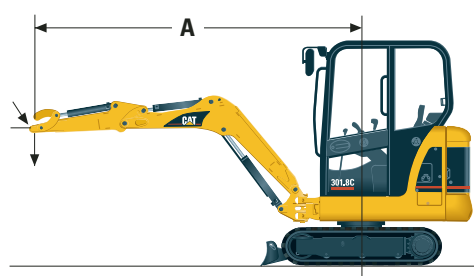
Gradeability (max.) 30°

- Each track is driven by one independent 2-speed motor
- Drive modules are integrated into the roller frame for total protection
- Straight line travel when tracking and operating the front linkage simultaneously

# Dimensions and Lift Capacities



Lift Capacities at Ground Level	Over front	Over side	Over front	Over side
<b>A</b> Lift Point Radius (mm)	2000		3000	
Standard Undercarriage				
Blade down (kg)	*787	362	*450	219
Blade up (kg)	515	329	300	201
Extended Undercarriage (301.8 only)				
Blade down (kg)	*782	580	*445	334
Blade up (kg)	524	536	303	311



\* Limited by hydraulic capacity rather than tipping load.  
 The above loads are in compliance with SAE hydraulic excavator lift capacity rating standard SAE J1097 and they do not exceed 87% of hydraulic lifting capacity or 75% of tipping capacity.  
 The excavator bucket weight is not included on this chart. Lifting capacities for standard stick.

## Standard Equipment

Standard equipment may vary.  
 Consult your Caterpillar dealer for specifics.

- Adjustable wrist rests
- Alternator
- Automatic swing parking brake
- Auxiliary hydraulic circuit valve, controls and 'one way' (hammer) lines to the stick
- Auxiliary line quick couplers
- Boom cylinder guard
- Cab mounted work light
- Canopy, FOPS ISO 10262 (Level I) and TOPS ISO 12117
- Coat hook and cup holder
- Dozer blade with float function
- Floor mat
- Gauges or indicators for fuel level, engine coolant temperature, hour meter, engine oil pressure, air cleaner, alternator and glow plugs, service interval
- Horn
- Hydraulic oil cooler
- Lockable storage box
- Low maintenance linkage pin joints
- Maintenance-free battery
- Mobile phone holder and power point
- Rubber track, 230 mm wide
- Seatbelt, 50 mm
- Standard stick
- Suspension seat, vinyl covered
- Travel pedals
- Two-speed travel (dozer lever mounted)

## Optional Equipment

Optional equipment may vary.  
 Consult your Caterpillar dealer for specifics.

- 'Two way' (auger) auxiliary lines to the stick
- Biodegradable hydraulic oil
- Boom check valve
- Boom mounted light
- Cab, fully glazed with FOPS per ISO 10262 (Level 1), TOPS per ISO 12117, heater/defroster, interior light, windshield wiper and washer
- Control pattern changer
- Ecology drain valve for hydraulic tank
- Ecology drain valve for engine oil
- Fan and sun blind installation
- Front screen guard for cab and canopy
- Immobilizer system
- Long stick
- Mechanical quick coupler
- Mirrors, for cab and canopy
- Radio/CD player
- Radio installation kit
- Seat belt, 75 mm wide
- Suspension seat, fabric covered
  - Standard
  - High back
- 'Thumb ready' stick
- Tool kit
- Travel alarm
- Work tools